



- 58 **KINGS OF PERSIS. Uncertain King, ca. 150-100 BC.** Drachm. 4.04 gm. Head r. wearing satrapal cap with eagle and crescent / Fire altar with bust of Ahura-Mazda flanked by king and eagle standard. Alram 551. *Dark toning over some deposits* **Good VF** **250.**
- 59 **Darios (Darev) II. Ca, First Century BC.** Drachm. 3.87 gm. Bearded bust l. wearing a tiara adorned with a crescent / King standing l. worshipping at altar. Alram 564var, De Morgan p.406, 30var. *Lightly toned* **Good VF** **150.**
- 60 **Pakor I, ca. 50-1 BC.** Drachm. 3.88 gm. Diademed bust l. / Diademed bust l. Alram 589. *Lightly toned* **EF** **175.**
- 61 **Pakor I.** Drachm. 2.0 gm. Diademed bust l. / Triskeles. **RARE** **EF** **200.**



- 62 **INDO-GREEK KINGS OF BAKTRIA. Diodotos I, the name of Antiochos II of Syria. Ca. 255-235 BC.** GOLD Stater. Attic standard. 8.3 gm. *Mint 'A' (near Ai Khanoum).* Diademed head of Diodotos I r. / Zeus advancing l., holding a thunderbolt, an aegis draped over his extended left arm, eagle before him, N in left field; ΒΑΣΙΛΕΩΣ ΑΝΤΙΟΧΟΥ. Cf. MIG 63, Holt Series A Group 7 (Tetradrachm) for type; SC 629. *Scratches behind the head. Large attractive portrait on a broad flan (for series). No test cuts and Rare thus* **EF** **5,000.**



- 63 **BAKTRIA. Diodotos II, ca. 235-230/225 BC.** GOLD Stater. *Mint 'A' (near Ai Khanoum).* 8.32 gm. Diademed head of Diodotos I r. / Zeus advancing l., holding a thunderbolt, an aegis draped over his extended left arm, eagle before him, wreath in left field; ΒΑΣΙΛΕΩΣ ΔΙ ΟΔΟΤΟΥ. Bop--, MIG--. **VERY RARE.** *Light obv. deposits, scrape on edge and back of head and some obv. pinscratches. Superb style* **EF and About as Struck** **7,500.**



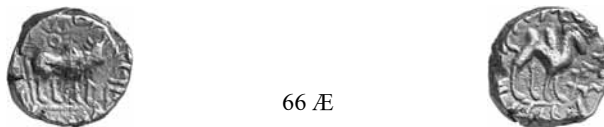
- 64 **BAKTRIA. Eukratides I, ca. 171-145 BC.** Drachm. 4.07 gm. Diademed and draped bust r. / The Dioskouroi riding r., monogram below. MACW 1406 **Good VF** **275.**



65 Æ

- 65 **INDO-SCYTHIAN KINGDOM in ARACHOSIA. Maues, ca. 90-57 BC.** Square Hemiobol. 9.41 gm. Elephant striding r., trunk raised to trumpet / Brahmin bull r. **RARE. Deep olive-green over light deposits** **VF** **200.**

KUSHAN AND ANCIENT INDIA



66 Æ

- 66 **KUSHAN EMPIRE. Vima Takha (son of Kujula Kadphises), ca. 55-105 AD.** AE Dichalkon. Brahmin bull r. / Camel r. MACW 2895var **VF** **100.**



67 A

68 A

69 A

- 67 **Vima Kadphises, ca. 90-100 AD.** GOLD Dinara. 7.9 gm. Crowned and diademed bust l. emerging from clouds, holding a scepter and a flail, tamgha behind; BACIA EYC OOH-MO KAAΦIHC / Nude Siva standing facing, holding a trident, club and lion's skin, tamgha at left, Nandipada symbol right; Kharosthi legend around. Cf. Göbl *Kushan* 19. *Old scratch and light filemarks on obv* **VF** **750.**
- 68 **Huvishka, ca. 126-164 AD.** GOLD Dinara. 7.99 gm. Crowned and diademed bust l. emerging from clouds, holding a mace-like scepter and small ceremonial ax (?); stylized Greek legend: *King of kings, Huvishka the Kushan* / Radiate sun-god Mithra standing l. holding a long scepter, tamgha left; MIOΠO. Göbl *Kushan* 171. *Edge scrape* **VF** **450.**
- 69 **Huvishka.** GOLD Dinara. 7.82 gm. Crowned and diademed bust l. emerging from clouds, holding a mace-like scepter and small ceremonial ax (?) or flail; stylized Greek legend: *King of kings, Huvishka the Kushan* / Rain-god Khvareno (Pharro, a syncretized Jupiter) standing l., large tamgha before; ΦΑΡΟ. Cf. MACW 3200. *Scratch before bust and some light obv. pitting* **VF** **750.**



70 A

71 A

72 A

- 70 **Vasudeva I, ca. 164-200 AD.** GOLD Dinara. 7.97 gm. King standing l., hldg trident and sacrificing at altar, second trident in field / Siva standing l. hldg trident, bull Nandi behind, tamgha in upper left field. Göbl *Kushan* 507 **VF** **300.**
- 71 **LATE KUSHANS. Vasu Deva II, ca. 270-310 AD.** GOLD Dinara. 7.8 gm. King standing l. holding trident and sacrificing at an altar, his raiment designs indicated by pellets, trident standard behind, *Sa* left, *Vi* between feet and *VaSu* right / The goddess Ardoksho enthroned facing, large tamgha left. MACW 3542 **Good VF** **350.**
- 72 **Vasu Deva II.** GOLD Dinara. 7.81 gm. Types similar to above. Obv. *Bha* left, *Vi* between feet, *VaSu* at right. Cf. Göbl *Kushan* 574, MACW 3545 **Almost EF** **350.**



- 73 **KUSHANO-SASSANIAN. Varhran. Ca. 350 AD.** GOLD Dinara. 7.82 gm. King standing w/ trident sacrificing at altar, second trident in field, ornate tamgha in right field / Siva and the bull Nandi. Göbl *Kushan* 745. *Good style* **EF** 750.
- 74 **'Varhran' (Kidara). After 350 AD.** GOLD Scyphate Dinara. 7.25 gm. King standing l. with trident before altar, tamgha in right field, degenerate legends / Very crude Siva and Nandi, the bull. Cf. Göbl *Kushan* 735, Cribb 12var. *Typically crude* **Good VF** 400.
- 75 **'Varhran' (Kidara). After 350 AD.** Debased GOLD Dinara. 5.91 gm. King standing l. w/ trident at altar, tamgha in right field. Cf. Göbl *Kushan* 724. *Porosity* **About VF** 200.
- 76 **KIDARITES. Kidara. After 350 AD.** GOLD Dinara, scyphate-style. 7.47 gm. King stdg l. w/ trident before altar, tamgha in right field; degenerate legends / Very crude Siva stdg, Nandi behind. Cribb 12var., Göbl *Kushan* 735/1. *Crude as usual* **Almost EF** 350.



- 77 **Kidara. After 350 AD.** Dramma. 3.82 gm. Sassanian-style bust $\frac{3}{4}$ r wearing winged crown with solar ball and streamers / Fire altar flanked by attendants. Göbl *Hunnen* Em 11 **VF** 150.
- 78 **King 'C'. Ca. 385-390 AD.** Dramma. 3.62 gm. Bust $\frac{3}{4}$ r. wearing a winged crown with solar ball and tall streamers either side / Fire-altar w/ attendants. Göbl *Hunnen* 18. *Blank face as is typical* **VF** 125.



- 79 **GUPTA KINGDOM. Chandragupta II, c. 380-414 AD.** GOLD Stater. 7.79 gm. Archer type. King standing l. holding a bow and arrow, Garuda standard before / Laxmi seated facing. MACW 4800 **VF** 275.
- 80 **RATAS OF SAMATATA. Sridharana Rata, late 7th Century AD.** GOLD Dinara. 5.75 gm. Based on Gupta Archer types. Stylized king l. with bow and arrow, Garuda standard before / Stylized goddess standing l. MACW 4925 **EF** 450.
- 81 **SARABHAPURIYAS. Prasannamtra. Late Sixth Century AD.** GOLD $\frac{1}{2}$ Unit. Uniface. 1.31 gm. Facing Garuda with outstretched wings, conch at right, uncertain object left; legends below with conch and trident. Indian Museum Catalogue 103; cf. MACW p.599. **EXTREMELY RARE. Minor deposits** **About EF** 1,000.