

Republic. Aes grave triens. 275-270 B.C. 93.5 gm. Horse head right, four pellets below/ Horse head left, four pellets below. Thurlow/Vecchi 10. Pleasing glossy dark green patina. Good VF



Divus Augustus .Struck under Tiberius,35-36 AD.Sestertius.Rome.Radiate Augustus seated l.in car drawn by quadriga of elephants with riders /Legend around large SC,the numerals following POT are uncertain as it was flatly struck here. Cf.RIC 56,62,68.RARE.Deep forest-green patina over light surface pitting and a few old scratches. VF



Agrippa.AE 'As 'of Nemausus in GAUL ,ca.9-3 BC.Back to back heads of Agrippa I.and Augustus,laureate,r.; IMP DIVI F /Crocodile r.chained to palm tree,COL-NEM.RIC 158,RPC 524.Deep olive-tan brown with reddish hues. Nice busts of Agrippa and Augustus. Good VF



Agrippina,Sr.,wife of Germanicus,mother of Caligula.Posthumous,struck under Claudius . Sestertius.Her draped bust right /Legend around large SC.RIC (Claudius)102.Deep black patina over some roughness and light pitting. Even Fine /About VF



Nero Claudius Drusus, Æ Sestertius. Bare hd. of Nero C. Drusus I / Claudius seated on curule chair, c/m at right of obverse bust NCAPR in rectangular lozenge. Pitting. Yellow-brown. G; c/m = About VF



Caligula,37-41 AD.Sestertius,40-1 AD.Laureate head l./Caligula standing l.on platform,saluting five soldiers standing before him;ADLOCVT COH.Tan-yellow brown over some roughness.Nice broad flan. Good VF



As.Bare head l./Vesta seated l.holding patera and scepter.RIC 38.Attractive deep olive-sea green.Pleasing portrait. Ancient scrape behind head toned over.Otherwise. Almost EF



“Half Sestertius.”A Sestertius of 40-41 AD 13.45 gm.(Pietas seated /Caligula sacrificing before temple types)neatly cut in two to make change in ancient times.Cf.RIC 51.Deep blue-green with reddish earthen hues.Interesting. About VF



Claudius,41-54 AD. As.Bare head l./Liberitas standing,head r.,holding pileus.RIC 97.Rich glossy sea-green Choice VF 200.



Galba, 68-69 AD. Sestertius, 68 AD. 26.07 gm. Laureate and draped bust r. / Victory striding l. holding palladium and palm, S-C. RIC 256. Strong portrait. Deep olive-green Good VF



Galba, 68-69 AD. A Sestertius. 26.26 gm. Laur. bust r. / Libertas stg l.; LIBERTAS PVBLICA S.C. RIC 389. Deep brown. Good portrait. Smoothing VF

Vespasian, 69-79 AD. AE Sestertius, 71 AD. 24.69 gm. Rome or Lugdunum. Laur. bust r., IMP CAES VESPASIAN AVG PM TR P PP COS. / Pax stg l. w/ branch and cornucopiae; PAX AVGVSTI S.C. RIC 437. Deep green and yellow-brown VF

Quadrans. 2/85 gm. Modius with three ears of grain; IMP NERVA CAES AVG / Caduceus; S-C. RIC 112. Deep olive green-brown. Patina over light reverse deposits. Smoothing. VF



Nerva, 96-98 AD. Sestertius, 97 AD. 30.86 gm. Laureate bust r.; IMP NERVA CAES AVG PM TRP II COS III PP / Fortuna standing l. holding rudder and cornucopiae. RIC 98. Deep olive-brown. Nice portrait. Pleasing Choice VF



Quadrans. Modius with three ears of grain / Caduceus; S-C. RIC 112. Deep olive green-brown over some light reverse deposits. Some smoothing. Choice VF / VF 125.

Domitian.AE As 88-89 AD. 11.03 gm. Head r./ SC in front of temple with six columns. RIC 202, 385a. *Ex The New York Sale IV, # 363.* EF



Trajan, 98-117. Dupondius, 103-11 AD. Radiant head r./Roma standing l. holding Victory and spear. RIC 484. Deep chestnut brown over minor obverse roughness. EF



As, 98-99 AD. Laureate head r./ Victory moving l. holding circular tablet inscribed SPQR. RIC 402 .A green spot. Deep olive-green. Excellent portrait . EF



Quadrans. Laureate bust r./ Boar standing l.; SC. RIC 695. Deep olive sea-green over some roughness. Good VF



Hadrian, 117-138 AD. Dupondius or As, 134-8 AD. Laureate head r./ Modius with corn-ears and two poppies. RIC 798. Deep olive-brown. Choice VF



Sabina, Augusta, 128?-136 AD. Sestertius. Draped bust r.; SABINA AVGVSTA HADRIANI AVG PP / Pietas standing r., placing hands on heads of two children who flank her. RIC 1031. Strong portrait. Olive-brown Choice VF



Æ Antoninus Pius, 138-161 AD. Sestertius, 145 AD. 25.64 gm. Laureate head r. / Felicitas stg l. holding capricorn and caduceus. RIC 770, Cohen 363. Deep semi-glossy olive-brown. Superb portrait EF / Ab EF



Æ Sestertius, 157/58 AD. 21.63 gm. Laur. bust r.; ...TR P XXI / Octastyle temple, Divus Augustus and Livia within; TEMPLVM DIV AVG. CAESI COS IIII S.C. Cf. RIC 978. RARE. Some scratches on neck and before. Dark brown patina broken on back of bust, yellow-brown VF



Faustina. Sr., wife of Antoninus Pius. Dupondius. 12.23 gm. Draped bust r.; DIVA FAVSTINA / Aeternitas standing l. with phoenix (looks like a pelican) and raising skirt. RIC 1157. *Light smoothing.* Deep olive-green. EF



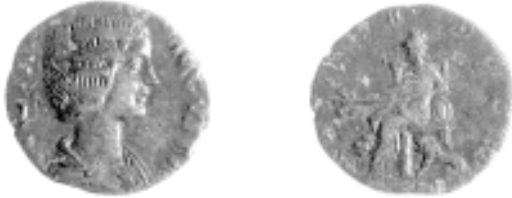
Marcus Aurelius, 161-180. Sestertius, 169 AD. 33.54 gm. Laureate head r. / Salus standing l. feeding serpent from patera over altar. RIC 964. Deep apple green. Struck on unusually thick flan. About VF to VF



Commodus, as Augustus with M. Aurelius, 177-180 AD. Sestertius, 178 AD. Laureate young bust r. / Libertas standing l. with pileus and rod. RIC 1588. *Lovely light blue-green.* Choice portrait About EF / VF. **250.**



Manlia Scantilla, wife of Didius Julianus. Æ Sestertius. 20.03 gm. Draped bust r.; MANL SCANTILLA AVG. / Juno stg. l. with patera and scepter, peacock at her feet (reverse legend mostly off flan). RIC 19a. Very Rare. Some surface pitting and pocks. Clear type and obverse legend. Yellow-tan brown F



Julia Domna, wife of Septimius Severus. Æ Sestertius. 17.65 gm. Draped bust r. / Cybele seat. l. between two crouching lions, hldg. branch; (M)AT(E)R D(E)VM. RIC 859. Rare. Slight roughness, and minor excess metal. Deep reddish-brown with some earthen hues. Lovely portrait About EF / VF



Julia Domna, AE As. Bust r./Luna in biga galloping l.; LVNA LVCIFERA S.C. RIC 600 (R2). Deep green patina with light earthen hues over light roughness. VF



Geta, as Augustus, 209-211 AD. Sestertius, 210 AD. 28.59 gm. Laureate, bearded bust r. / Caracalla and Geta standing sacrificing over tripod, flute-player standing facing behind. RIC 156 (R2), Cohen 145. Pleasing burgundy-red-brown. Some tooling. Still attractive Good VF



Otacilia Severa, wife of Philip I, Augusta, 244-249 AD. Sestertius. 16.18 gm. Diademed, draped bust r. / Pietas standing l. sacrificing and holding perfume box; PIETAS AVGVSTAE. RIC 198. Deep glossy olive-brown with burgundy hues About EF



Gordian III, 238-244 AD. Sestertius. 20.58 gm. Laureate, draped bust r. / Mars hastening r. with shield and transverse spear. RIC 333. Olive-brown with pale blue-green Choice, Almost EF



Trajan Decius, 249-251 AD. Double Sestertius. 34.53 gm. Radiate, draped and cuirassed bust r./ Felicitas standing l. with long caduceus and cornucopiae; FELICITAS SAECVLI SC. RIC 115a, Cohen 39. Nice thick flan. Some smoothing. Deep olive-brown About VF to VF



Clay Study? of Roman Medal of Probus (276-282 AD). 35 mm. 12.74 gm. Cuirassed bust of Probus l. wearing plumed helmet, holding spear over shoulder and shield; IMP PROBVS P AVG. / Three figures of Moneta standing l. on baseline, each with cornucopiae and scales; MONETA AVG. Light old edge chipping. Grayish color. Cf. BMC plate IX, 1-3 for reverse type. 19th Century Museum study? or older VF



Severus II, as Caesar, 305-306 AD. AE Post-Reform Radiate. Alexandria. Radiate bust r./ Galerius standing at left receiving Victory on globe from Jupiter, B between them; CONCORDIA MILITVM, ALE in ex. Tan-brown. About EF



Constantine I the Great. Reduced Follis, 328-29 AD. Constantinople. Diademed and draped bust r. / Victory seated l., looking r., on cippus, holding palm branches and trophy, kneeling captive before her; CONSTANTINIANA DAFNE, B in left field, CONS in ex. RIC 38 (R4). *Very attractive deep chestnut toning. Pleasing portrait. About EF*



Hanniballianus, Rex Regum, 335-337 AD. AE4 (Nummus). Bare-headed, draped and cuirassed bust r. / Euphrates seated r. on ground, leaning on scepter, urn at side, reed in background. Vagi 3185. Scarce. Compact flan with weak peripheries. Olive-brown. Good VF



Similar to the one shown

Leo I, 457-474. AE2. 3.25 gm. Diademed, dr., and cuir. Bust r. / Leo stg. r., foot on captive, SALVS REI - PVBLICAE. Cf. RIC 664 (R4). Scarce. Dark patina Choice VF



Similar to the one shown

Verina, wife of Leo I. AE2. 4.70 gm. Diad. and dr. bust r. / SALVS REISPVBLCIAE, CONE in ex. RIC 656 (R3). VERY RARE. Brown Choice VF